



REC# #: 752859  
 RECORDED 5/8/2019 AT 1:21 PM BK# 2620 PG# 1901  
 Debra K. Lee, CLERK OF LARAMIE COUNTY, WY PAGE 1 OF 1

# STATE OF WYOMING CORNER RECORD

(In compliance with the CORNER PERPETUATION AND FILING ACT, Wyoming Statutes, 1997 Section 33-29-140, et. seq., and the Rules and Regulations of the Board of Registrations for Professional Engineers and Professional Land Surveyors)

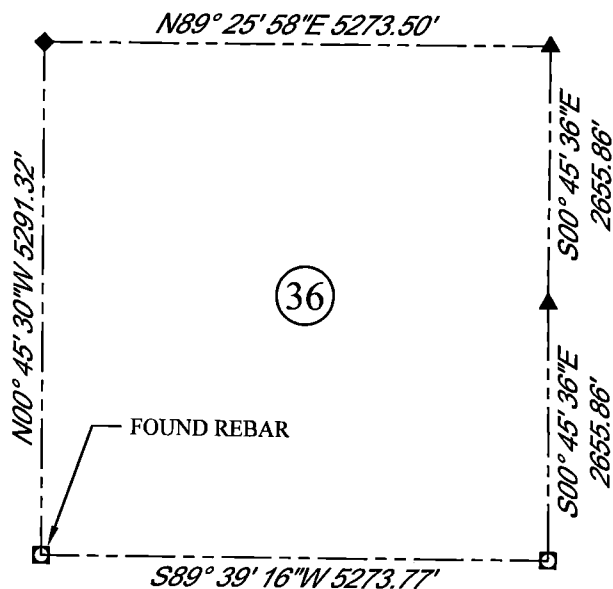
**SOUTH WEST CORNER SECTION 36, T. 18 N., R. 63 W., 6TH P.M.,  
 LARAMIE COUNTY, WYOMING**

**GLO:** SET A SANDSTONE 18X10X5 12 IN. DEEP WITH 5 MARKS ON THE WEST AND ONE ON THE EAST FOR CORNER TO SECTIONS 1, 2, 35 AND 36

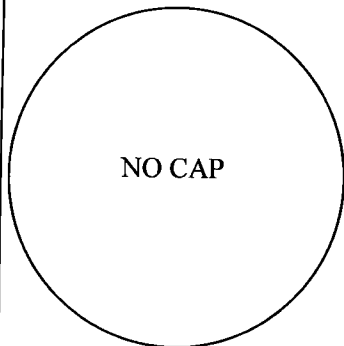
**FOUND:** REBAR, NO CAP, 0.4' ABOVE SURFACE, ON THE N.E. SIDE OF N., E., W. FENCE CORNER.



SCALE: NONE  
 NORTH DETERMINED BY  
 G.P.S OBSERVATIONS



FOUND: REBAR, NO CAP



**LEGEND:**

- FOUND BLM CAP
- FOUND USFS CAP
- FOUND STONE
- FOUND PRIVATE MONUMENT
- ◆ CALCULATED POSITION
- ▲ SET MONUMENT (LS10245)
- SECTION LINE

DATE OF FIELD WORK: 08/22/2018 OFFICE REFERENCE: 746049

**CROSS INDEX DIAGRAM**

1	2	3	4	5	6	7	8	9	10	11	12	13	14	15	16	17	18	19	20	21	22	23	24	25	
A																									A
B																									B
C	6				5				4					3					2					1	C
D																									D
E																									E
F																									F
G																									G
H																									H
J																									J
K																									K
L																									L
M																									M
N																									N
O																									O
P																									P
Q																									Q
R																									R
S																									S
T																									T
U																									U
V																									V
W																									W
X																									X
Y																									Y
Z																									Z
	1	2	3	4	5	6	7	8	9	10	11	12	13	14	15	16	17	18	19	20	21	22	23	24	25

WOOD  
 2615 AVIATION DRIVE  
 SHERIDAN, WY 82801  
 PH: 307-675-6400



THIS CORNER RECORD WAS  
 PREPARED BY ME OR UNDER  
 MY DIRECTION AND  
 SUPERVISION,  
 SEAL AND SIGNATURE

